
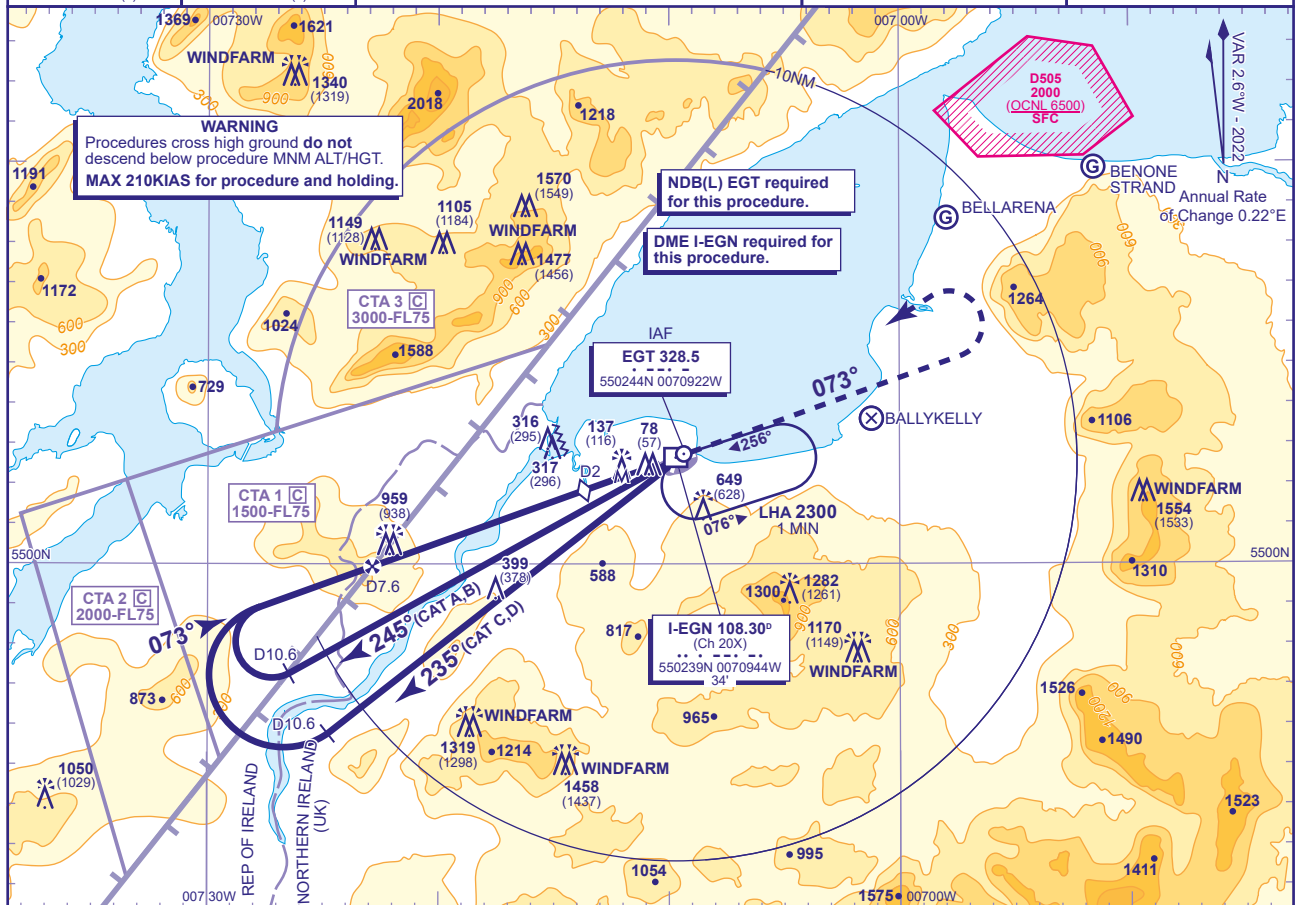
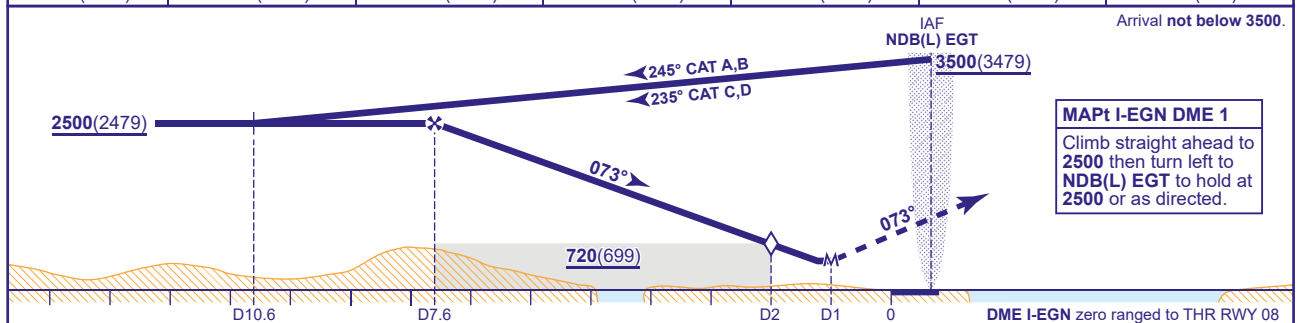
 <p>MSA 25NM NDB(L) EGT</p>	 <p>MSA 7NM NDB(L) EGT</p>	APP 123.625	EGLINTON APPROACH	AD ELEVATION 23	<p>LOC/DME Z (Offset LOC) RWY 08 (ACFT CAT A,B,C,D)</p>
		TWR 134.155	EGLINTON TOWER	THR ELEVATION 21	
		ATIS 119.380	EGLINTON INFORMATION	OBSTACLE ELEVATION 1570 AMSL (1549) (ABOVE THR)	
				BEARINGS ARE MAGNETIC	TRANSITION ALTITUDE 3000



RECOMMENDED PROFILE Gradient 5.24%, 318FT/NM						
DME I-EGN	7	6	5	4	3	2 (SDF)
ALT(HGT)	2310(2289)	1990(1969)	1670(1649)	1350(1329)	1040(1019)	720(699)



Aircraft Category		A	B	C	D	Rate of descent	G/S KT	160	140	120	100	80
OCA (OCH)	Procedure	440(419)	440(419)	440(419)	440(419)		FT/MIN	850	740	640	530	420
VM(C)OCA (OCH AAL)	Total Area	950(927)	950(927)	1710(1687)	1710(1687)							
	North of RWY 08/26	420(397)	520(497)	720(697)	730(707)							

NOTES	<p>1 Lowest altitude to commence procedure from hold is 2500.</p> <p>2 FAT offset 2.7° from RWY 08 C/L.</p> <p>3 DME not usable below 3500 between 140° and 185° due to terrain effects.</p> <p>4 Aircraft are permitted to enter the Eglinton CTA areas whilst using these procedures and under the control of Eglinton ATC.</p>
-------	---

	1	2	3	4	5
1	0	0.76	0.89	0.91	0.92
2	0.76	0	0.80	0.82	0.83
3	0.89	0.80	0	0.85	0.86
4	0.91	0.82	0.85	0	0.87
5	0.92	0.83	0.86	0.87	0

CHANGE (1/22): DME LEGN DME ELEVATION
